



# SecureEmail

Policy-based End-to-End Email  
Encryption

# What is SecureEmail?

SecureEmail is an ideal solution for ensuring authenticity and privacy without changing the way you send and receive email. It combines the industry's best encryption technologies with invisible, non-intrusive key management that just works with your preferred email client software.



## Intuitively Label Sensitive Email

Leverage powerful policy-based security control by effortlessly classifying emails. Each label determines how email is classified and secured as it is transmitted, stored, forwarded, or replied to.

Labels work like those used for standard paper document classification, such as "Confidential" or "Top Secret", and are entirely customizable in terms of types and security levels.



## Key Management that Just Works

Automatically manages keys to ensure that email is protected without users having to understand or even see public and private keys.

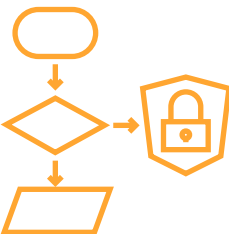
SecureEmail supports unlimited RSA key lengths, while at the same time storing an unlimited key history to ensure that archived email always remains accessible.



## Seamless Integration with Email Clients

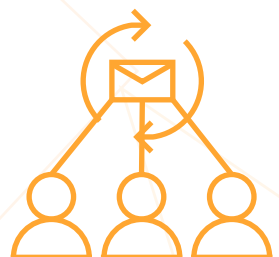
Featuring plugins for the industry-standard email clients, Microsoft Outlook and IBM Notes, SecureEmail supports the software most used by businesses and enterprise.

SecureEmail can even incorporate customized email business logic, such as email classification and unique policy settings for each user.



## Custom Algorithms for Advanced Security

Provided with the advanced cryptographic algorithms of RSA, DSA, ECDSA, 168-bit Triple-DES and 256 AES, SecureEmail also allows for the easy addition of user-created, indigenous, or custom encryption algorithms.



## Automated Sending Agent

SecureEmail can help businesses and enterprises by automating secured email transmissions between applications and users. This is achieved through routing sensitive emails from applications to a SecureEmail service before being sent to large groups of assigned users.

# This is Not Gateway Email Security

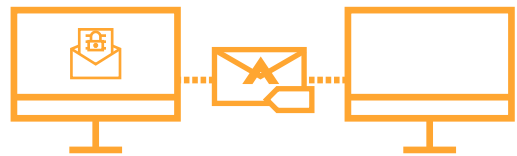
Serious email security threats strike at the sender or receiver's computer, or even at an email server itself. Once these points are compromised, no Gateway Security Solution in the world offers any protection.



## Gateway Email Security

### Over-the-Air Only

Email is in plain view while inside the user's PC and on enterprise servers.



## SecureAge SecureEmail

### End-to-End Protection

Email is always encrypted while at rest, in motion, and over the air.

SecureEmail goes above and beyond Gateway Email Security Solutions by keeping email encrypted and inaccessible from unauthorized users, providing true end-to-end email security without altering the way you send or receive email, or the mail client software with which you do it.

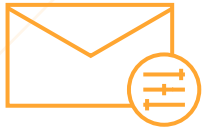
# SecureEmail Helps Businesses Achieve Regulatory Compliance

Satisfying the likes of:

- ✓ California Privacy Bill (SB 1386)
- ✓ Sarbanes-Oxley Act of 2002 (SOX)
- ✓ Health Information Portability and Accountability Act of 1996 (HIPAA)
- ✓ Gramm-Leach-Bliley Act of 1999 (GLBA)
- ✓ General Data Protection Regulation (GDPR)



# SecureEmail Key Features



**Policy-Based Security**  
Easily encrypt email with user-defined or pre-loaded classification levels that determine the security of the message



**Digital Rights Management**  
Impose restrictions on email recipient list, expiry date, and rights to copy, save, print, screen capture, reply to, or forward messages



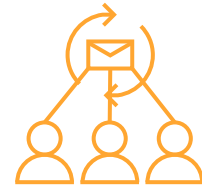
**Email Header Integrity Protection**  
Securely sign and encrypt header and content to ensure email integrity



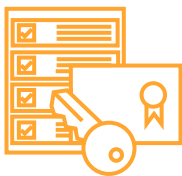
**Auto-Retrieval of Recipient Digital Certificate**  
Automatically locate and import recipient certificates for future use



**Automatic Digital Certificate Management**  
Automatically issue, validate, revoke, and update digital certificates



**Automated Sending Agent**  
Routinely send out sensitive emails to large groups securely and automatically using SecureEmail



**Compatible with SecureAge Management Server**  
Extend central policy issuance and control, audit logs, and key management to SecureEmail users



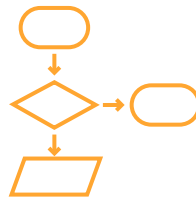
**S/MIME Email Support**  
Send encrypted email to non-SecureEmail users without the need for additional software



**Integrate with Popular Email Platforms**  
Enact all SecureEmail features with simple plugin for Microsoft Outlook and IBM Notes



**Smart Card & USB Token Support**  
Interoperable with all PKCS#11-based secure devices, such as Smart Cards, Security Tokens, Trusted Platform Modules (TPM), or Hardware Security Modules (HSM)



**Advanced Cryptographic Algorithm**  
Supports RSA, DSA, ECDSA, 168-bit Triple-DES & 256 AES



**User Defined Encryption Algorithms**  
Readily incorporate indigenous or proprietary encryption algorithms into SecureEmail

## Need More Information?



[www.secureage.com](http://www.secureage.com)



Contact us